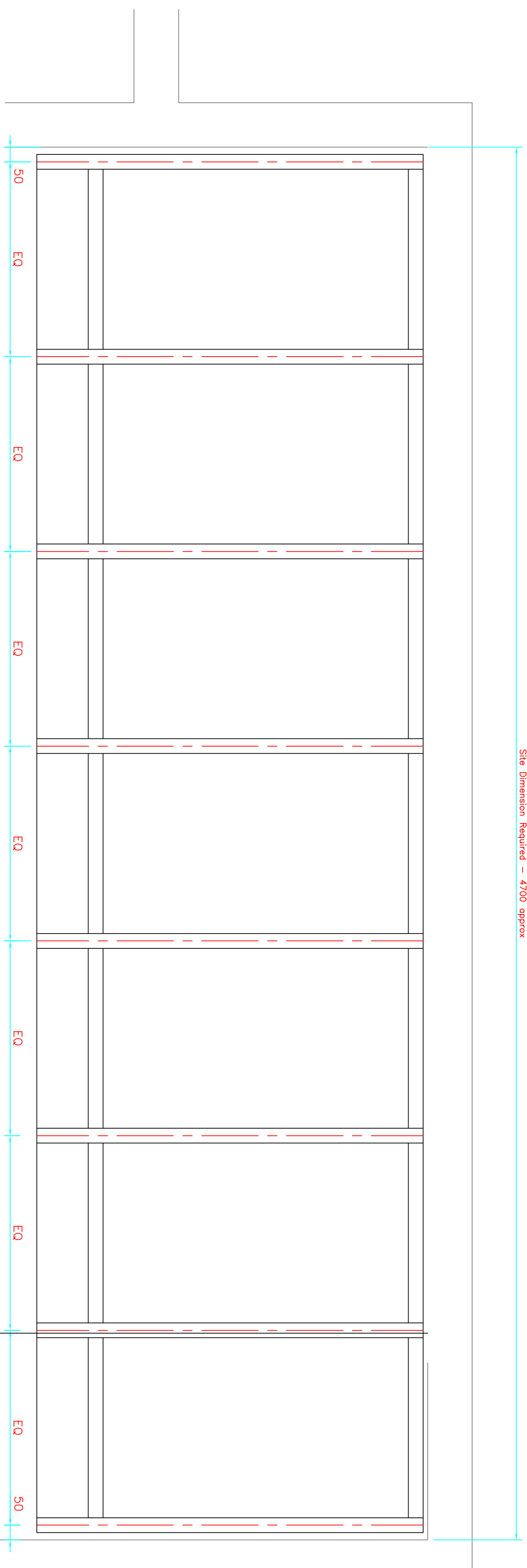
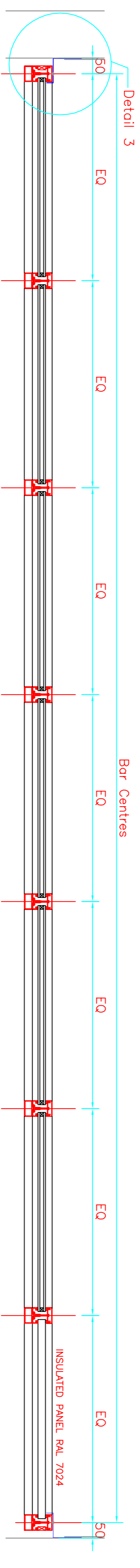


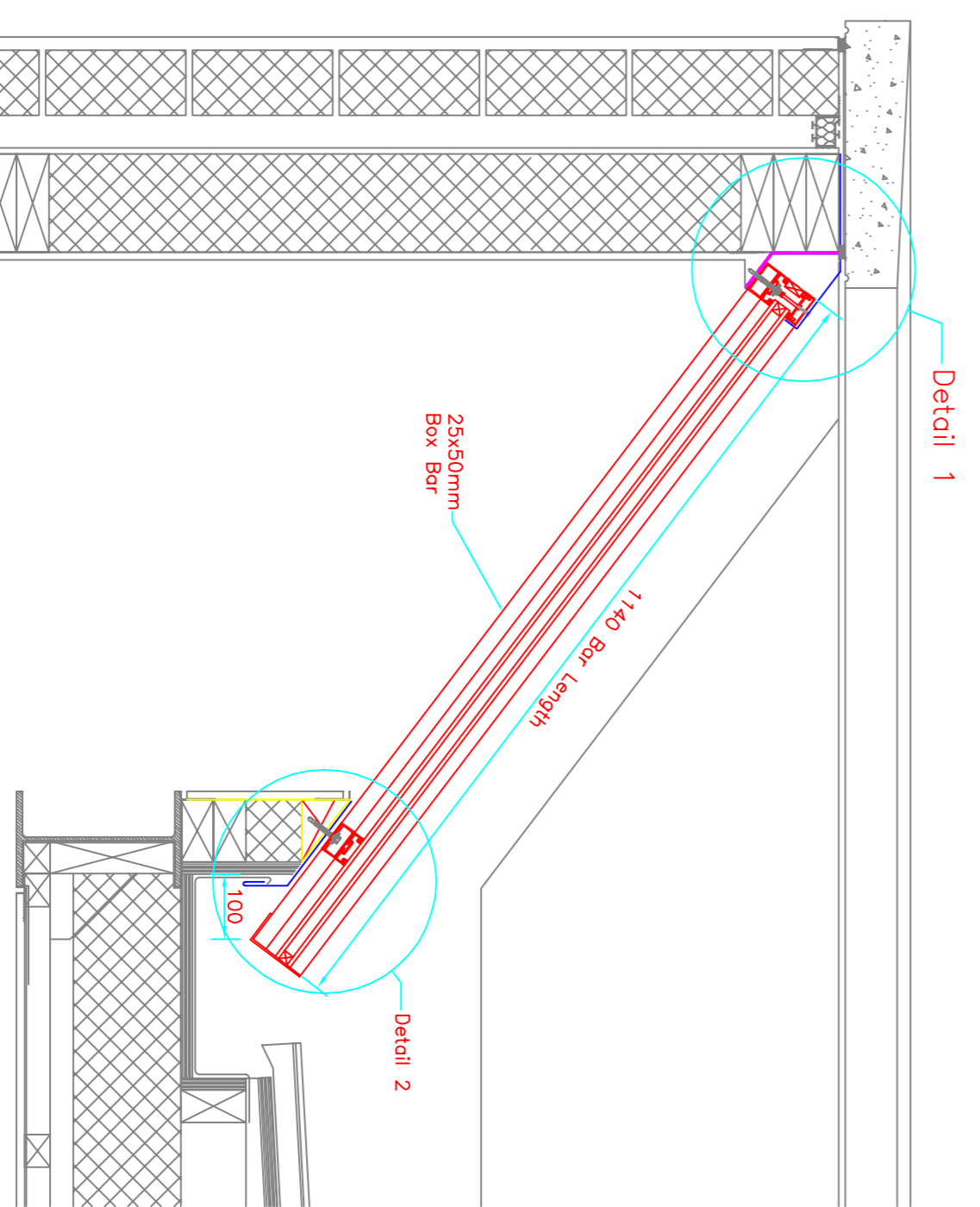
Site Dimension Required – 4700 approx



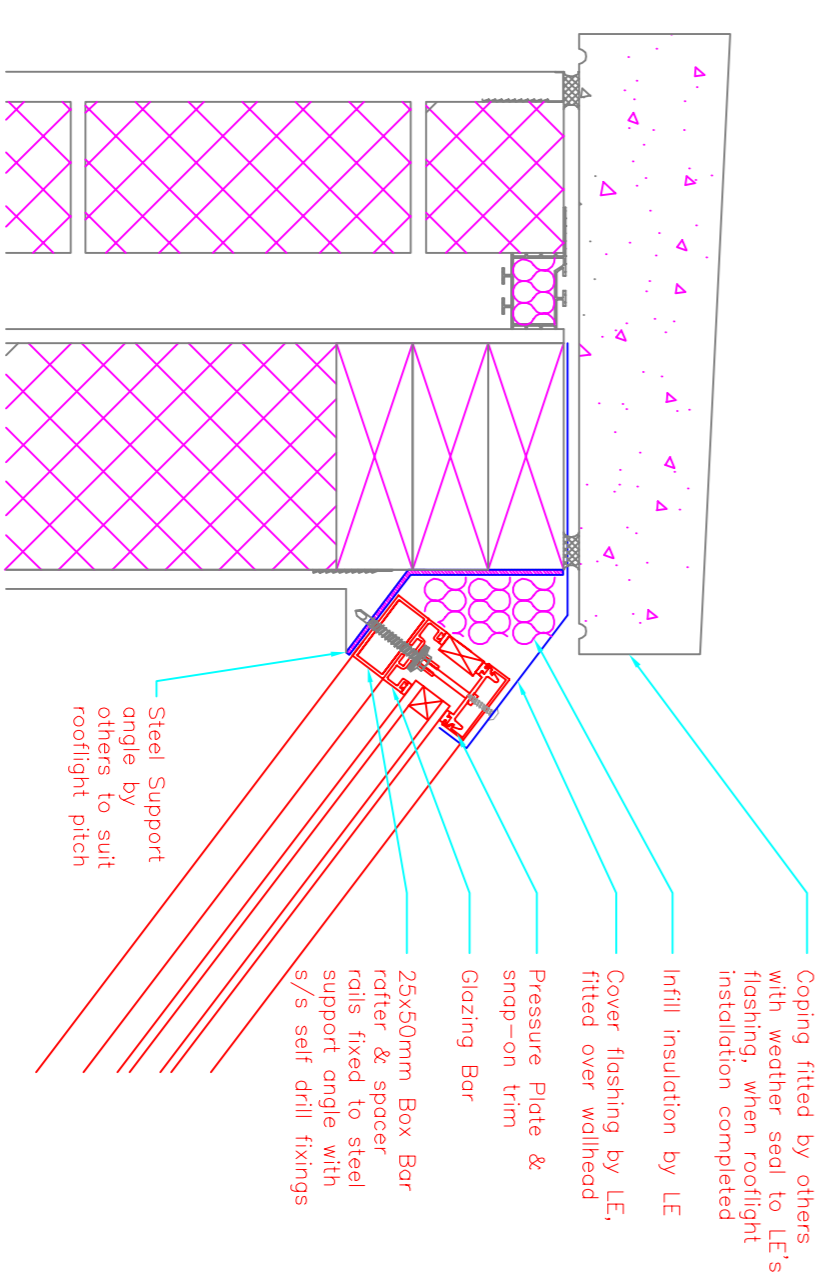
Rooflight Plan
Scale 1:10



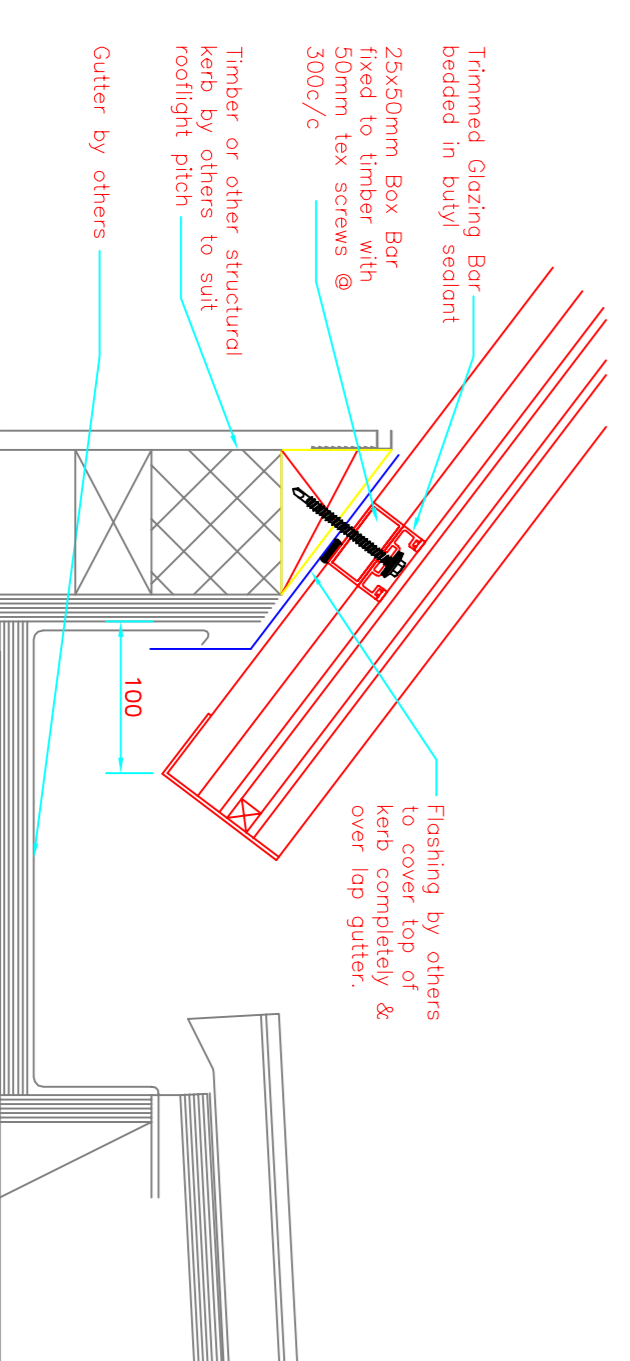
Section A-A
Scale 1:10



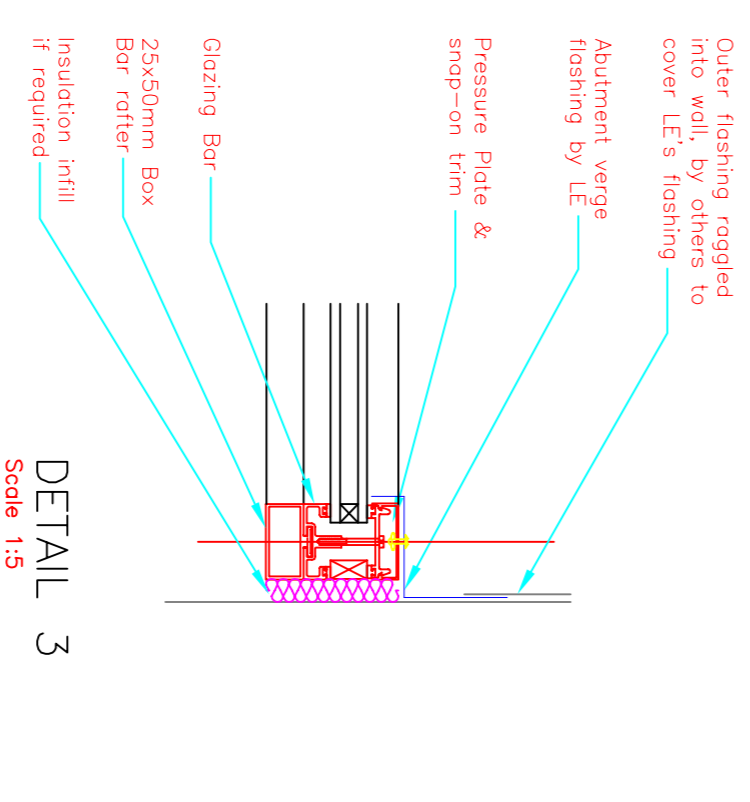
Section B-B
Scale 1:10



Detail 1
Scale 1:5



Detail 2
Scale 1:5



DETAIL 3
Scale 1:5

- General Notes:**
1. Do not scale this drawing.
 2. All Lareine Engineering Ltd drawings are to be read in conjunction with the relevant Lareine Engineering Ltd Specification and all relevant Architects and Service Engineers drawings and Specifications.
 3. All levels are in metres above ordnance datum. All dimensions are in mm's unless noted otherwise.
 4. Do not scale any Lareine Engineering Ltd drawings. If in doubt – ask. Work to figured dimensions only. Any discrepancies in dimensions are to be referred to the Designer before work is put to hand.
 5. All Rooflights view from the outside looking in.

Specification: (Typical)

Glazing Details
Sealed double glazed units comprising:
6.0mm Clear Low 'E' toughened outer.
16mm Air gap argon filled.
6.4mm Clear Laminite inner.
Frame
Polyester powder coated.
Standard RAL colour – TBA.

Title/Name		Date		Drawing number		Rev	
Monopitch Rooflight Abutment Details & Sections (Typical)		19/09/08		STD-003		A	
Drawn		Date		Scale A1		As Shown	
AWA		19/09/08		STD-003		A	
Rev		Revision note		Date		Signature/Checked	
A		Drawing updated		24.07.2014		RWG	
UNIT 1, ARMOULE INDUSTRIAL ESTATE, ARMOULE, WEST LOTHIAN, EH48-2JY Tel 01501 731 600 Fax 01501 733 828		LAREINE ENGINEERING LTD.					